

# WEST MANOR ELEMENTARY SCHOOL

Weekly Construction Progress Report  
Week 03/15/2021-03/19/2021



**Balfour Beatty**

## Current Activities 03/15/21-03/19/21

- Continue exterior masonry at gymnasium. (East and South Walls)
- Continue interior masonry at gymnasium.
- Continue metal framing and sheathing exterior walls at gymnasium.
- Continue air barrier at gymnasium.
- Continue electrical wall rough-in at gymnasium.
- Continue MEPF overhead rough-in at Renovation. (North Building/Main Entrance)
- Continue installation of mechanical and electrical trims (Admin/Media Center)
- Complete ceiling grid at media center and start MEP trims.
- Continue paint and prep at renovation.
- Continue hang/tape/finish drywall in corridors and hard ceilings.
- Continue tie in of new HVAC roof top units at existing building.
- Complete hard ceiling hang/tape/finish in East wing.
- Start wall tile prep/patch work
- Start epoxy flooring in kitchen and single restrooms.
- Start installation of ceiling tiles in SW wing.
- Completion of wiring to new switchgear.
- Receival of glass deliveries for new windows.

## Upcoming Activities 03/22/21-03/26/21

- Complete classroom addition steel decking.
- Start roofing at North Gymnasium low roof.
- Continue exterior CFMF walls and sheathing at gymnasium.
- Continue interior CMU at gymnasium.
- Continue electrical wall rough-in at gymnasium.
- Continue MEPF overhead rough-in at Renovation.
- Continue installation of mechanical and electrical equipment.
- Continue ceiling grid, ceiling tile, and MEP trims at renovation.
- Continue hang/tape/finish drywall in corridors and hard ceilings.
- Continue wall/ceiling prep and paint.
- Start new roofing system on North Building on existing standing seam roof.
- Continue wall tile in renovation bathrooms.
- Complete epoxy flooring in kitchen and single restrooms.
- Start brick and ground face CMU at gymnasium and additions.
- Switchgear inspection to schedule power transfer with GA Power.
- Start CMU Elevator Shaft at gymnasium.



Gymnasium Addition (South East)



Ceiling Tile Installation at SW Wing

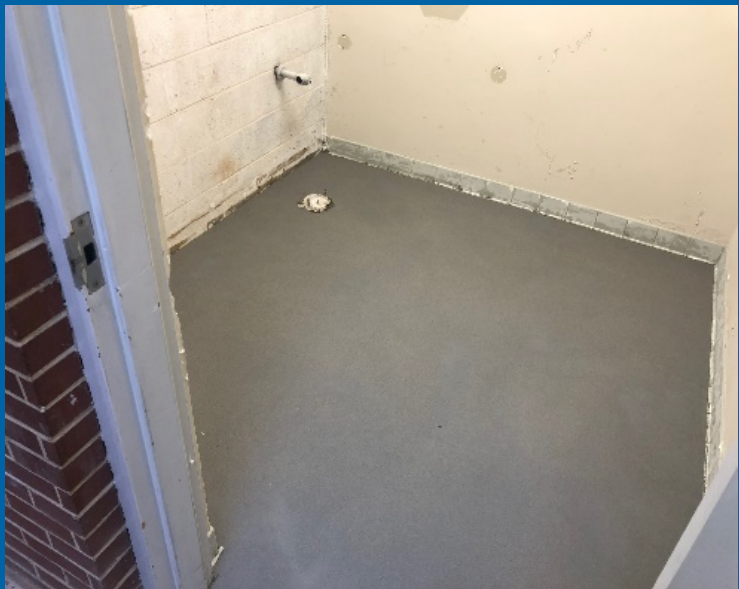
**Balfour Beatty**



# Activities



Main Electrical Room Switchgear



Epoxy Flooring On-going



Wall Tile Prep/Patch On-going



SW Wing Hard Ceiling Trims and Paint



Main Lobby Cloud Ceiling Grid Installation



Monumental Stair CMU at Gymnasium



## Project Schedule

- Schedule Status: On Schedule



## Project Financials

- Construction GMP: \$11,000,000
- Progress Billed to Date: \$5,614,603
- Budget Status: Within GMP

